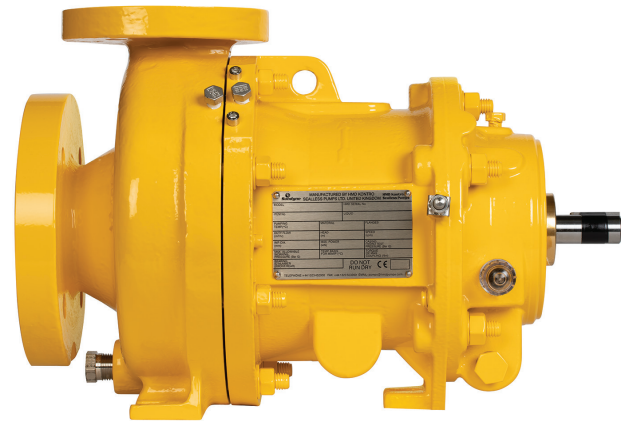


## Technical Profile

### HMD Kontro CSA Frame 1 (60Hz)

Magnet Drive end suction centrifugal pumps in accordance to ASME B73.3-2015

A modular range of chemical service pumps designed to cover a wide duty and application base using the minimum of pump models by maximizing interchangeability of components. Available within the range is the CSA (ASME B73.3-2015) and CSI (ISO 2858:2010 and ISO 15783:2003) versions. This profile covers the CSA derivative only.



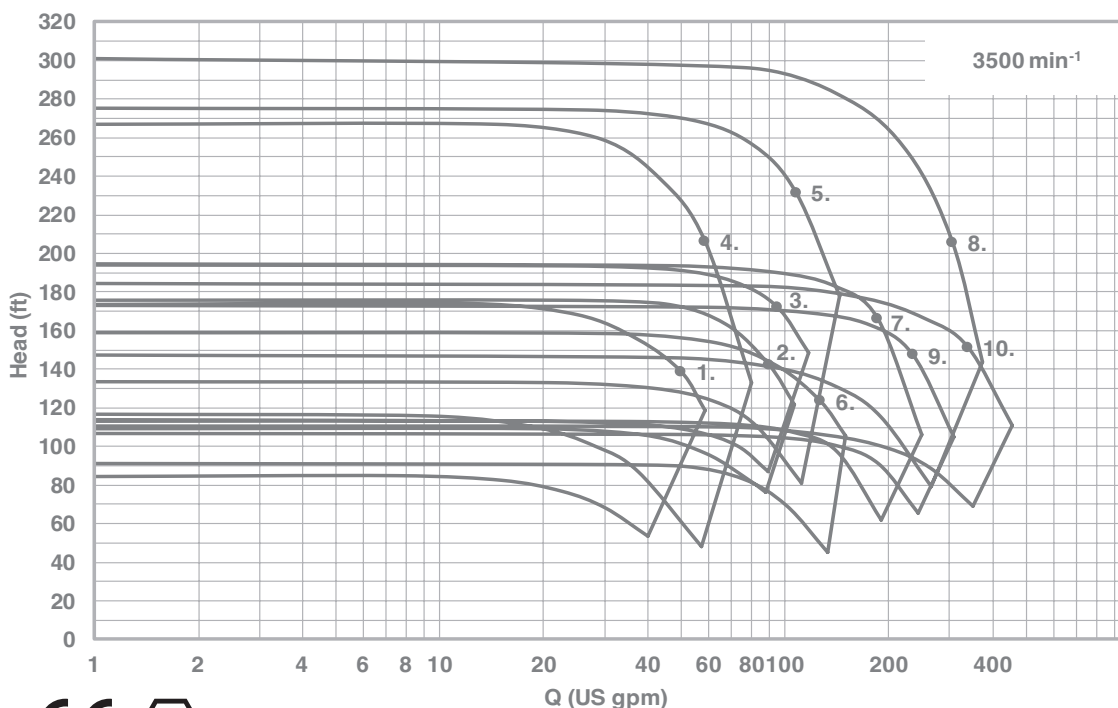
The CSA (ASME) Frame 1 product line covers a hydraulic range that offers pumping solutions up to 30hp. The pumps are offered with a range of bespoke Synchronous Magnetic Drives rated to match prime mover performance and fitted with either metallic or high efficiency ZeroLoss® containment shells as standard.

The range is based on a number of hydraulic sizes and fully conform to the ASME B73.3:2015 dimensional, performance and construction requirements. Close coupled and separately mounted variants are available.

The range is produced in 316 Stainless Steel as the standard material of construction with optional Alloy C and Alloy 20 materials available. Internal product lubricated bearings are Silicon Carbide, with Carbon and Ceramic Matrix Composite (CMC) variants to order.

A wide range of options are available including secondary sealing options and numerous bearing assembly variants. The range is specifically designed for maximum part interchangeability, ease of onsite service and has a wide number of site upgradable features.

### Performance of the CSA Frame 1 Pump Range



### Pump Model

Reference	CSA
1	1.5x1x6-L1
2	1.5x1x6
3	1.5x1x6H
4	1.5x1x8-L1
5	1.5x1x8
6	3x1.5x6
7	3x1.5x6H
8	3x1.5x8H
9	3x2x6
10	3x2x6H

## Key Design Features

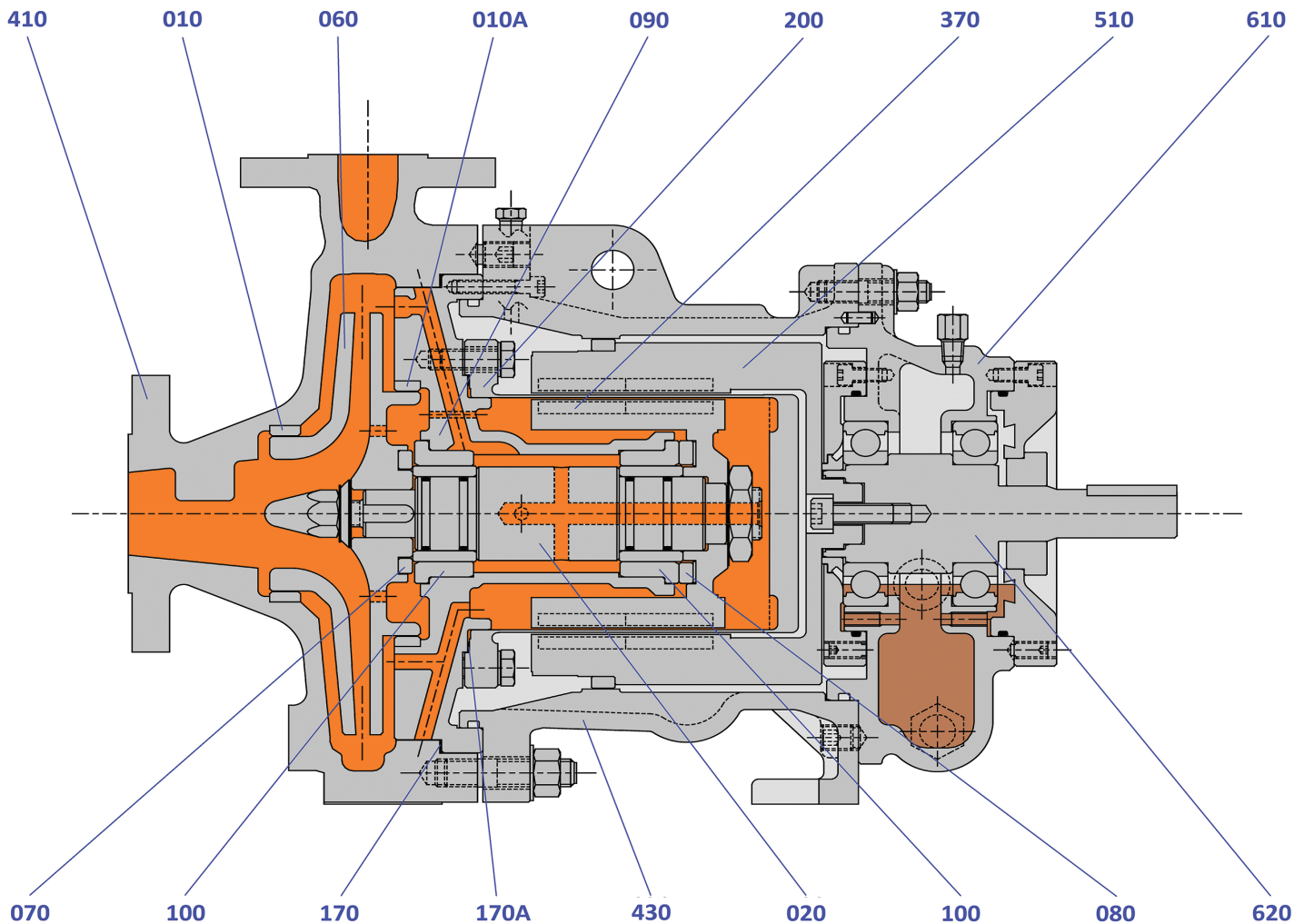
- **No Seals:** Minimizes maintenance, all of the associated costs and eliminates potential leaks.
- **Sealless Design:** For total containment, essential for hazardous, aggressive or valuable product.
- **Modular & Interchangeable Components:** For maximum convenience and minimal lead time.
- **High Efficiency Hydraulics:** To provide maximum flow / head coverage.
- **Low & High Flow Hydraulic Variants:** Provide optimised hydraulic fit.
- **Robust Design:** Featuring ZeroLoss® containment shell as standard for tolerance to system upsets.
- **Casing Gasket Fully Confined:** Eliminating the risk of blowout.
- **Internal & External Bump Ring Design:** Providing additional level of robustness.
- **Modular Rotating Element Cartridge:** Providing the most efficient way to perform replacements and manage your spare part inventory.

## Benefits of CSA Frame 1 Pump Range:

- Sealless design for total product containment
- Ideal for hazardous, toxic, aggressive, hot and valuable product
- Conforms fully to ASME standards
- Modular construction
- Interchangeable with existing ASME B73.1 or B73.3 installations
- Choice of materials of construction
- Site upgradable design features

## Construction of CSA Frame 1 Pump

Separately mounted variant indicating standard build and materials

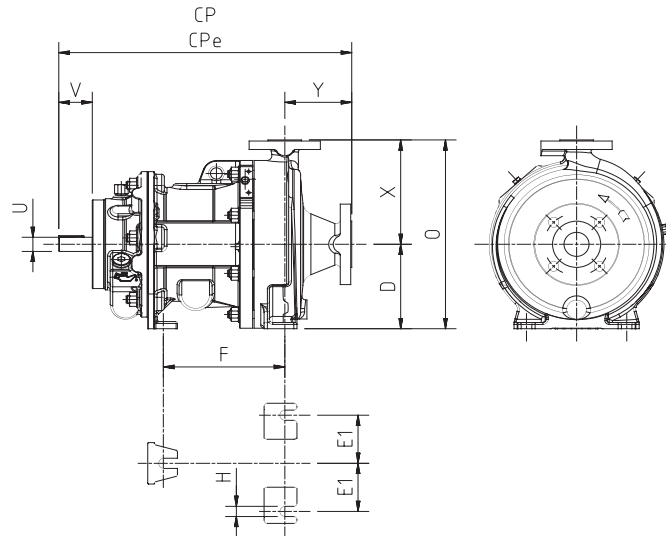


<b>010</b>	Neck Ring (Front)	316L St St	<b>090</b>	Bush Holder	316L St St	<b>410</b>	Casing	316L St St
<b>010A</b>	Neck Ring (Back)	316L St St	<b>100</b>	Bush	Silicon Carbide	<b>430</b>	Coupling Housing	SG Iron
<b>020</b>	Pump Shaft	316L St St	<b>170</b>	Casing Gasket	CSF	<b>510</b>	Outer Magnet Ring	C. Steel (Sheathed)
<b>060</b>	Impeller	316L St St	<b>170A</b>	Shell Gasket	CSF	<b>610</b>	Bearing Housing	SG Iron
<b>070</b>	Front Thrust Washer	Silicon Carbide	<b>200</b>	Containment Shell	Alloy C / 316L	<b>620</b>	Drive Shaft	Carbon Steel
<b>080</b>	Back Thrust Washer	Silicon Carbide	<b>370</b>	Inner Magnet Ring	316L St St Clad			

## Dimensions of CSA Frame 1 Pump

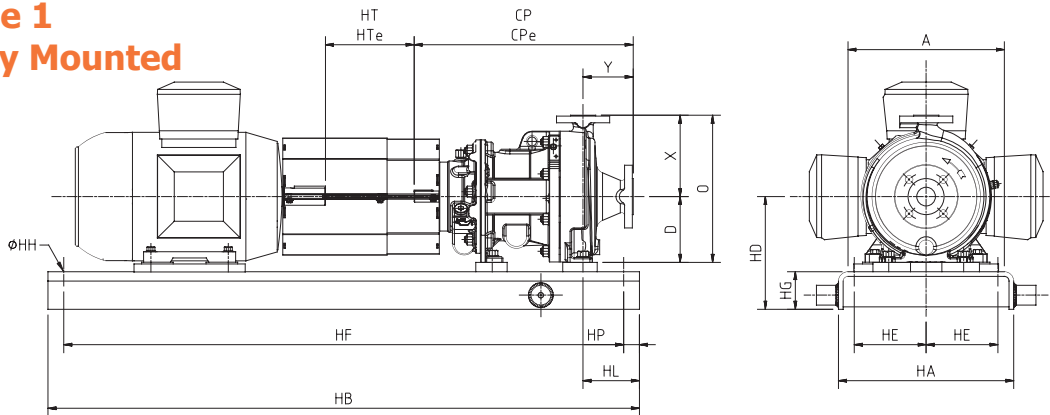
Dimensions are for guidance only

### CSA Frame 1 Separately Mounted (Bareshaft)



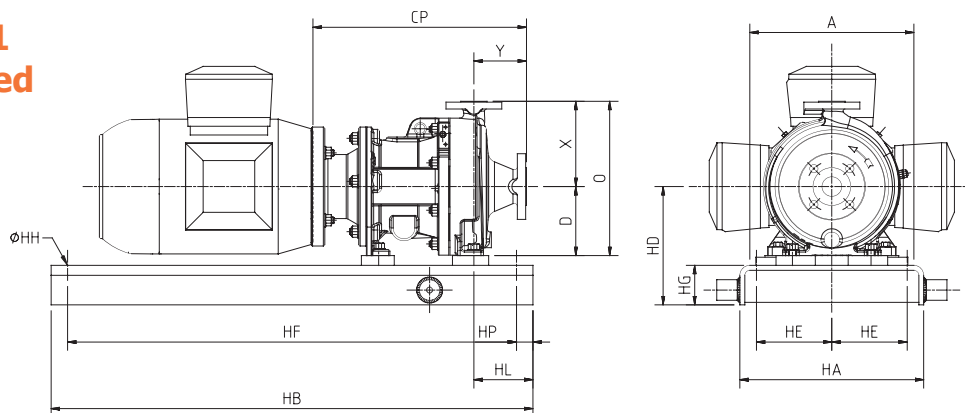
Size	CP	CPe	D	2E1	F	H	O	U	V	X	Y
All Frame 1	17.5	19	5.25	6	7.25	0.625	11.75	0.875	2	6.5	4

### CSA Frame 1 Separately Mounted



Motor Frame	A	HA	HB	HT	HTe	HD	HE	HF	HG	HH	HL	HP
143TC – 184TC	12	14	43	5.575	4	9	4.5	40.5	3	0.75	4.5	1.25
213TC – 256TC	15	17	52	5.575	4	10.5	6	49.5	3.5	0.75	4.5	1.25
284TSC – 326TC	18	20	57	5.575	4	12.5	7.5	54.5	4	0.75	4.5	1.25

### CSA Frame 1 Close Coupled



Motor Frame	CP	A	HA	HB	HD	HE	HF	HG	HH	HL	HP
143TC – 145TC	15.14	12	14	32	9	4.5	29.5	3	0.75	4.5	1.25
182TC – 184TC	15.65	12	14	32	9	4.5	29.5	3	0.75	4.5	1.25
213TC – 215TC	16.17	15	17	41	10.5	6	38.5	3.5	0.75	4.5	1.25
254TC – 256TC	16.80	15	17	41	10.5	6	38.5	3.5	0.75	4.5	1.25
284TSC – 286TSC	16.05	18	20	44	12.5	7.5	41.5	4	0.75	4.5	1.25

## Range Capabilities (60hz)

Model	Head	Flow	Design Temperature	Design Pressure	Viscosity	Mounting
<b>CSA Frame 1</b>	296 ft	340 US gpm	-40 to 400°F*	275 psi (at 100°F)	0.1 to 200 cSt	Separately Mounted or Close Coupled

\*500°F with Thermal Spacer

## Solids Handling

The units are capable of handling solids up to 5% w/w with sizes less than 150 microns.

## Flanges and Connections

### Casing

Suction and discharge flanges are designed in accordance with the following standards:

<b>ASME B16.5 Class 150lb</b>	Machined with 0.06 inch raised face having a continuous spiral groove
-------------------------------	---

### Options

A wide variety of options are available:

#### Materials of Construction:

- 316L Stainless Steel (standard)
- Alloy C (optional variant)
- Alloy 20 (optional variant)

#### Containment Shells:

- Metallic Construction (-40°F to 400°F)
- High Efficiency ZeroLoss® PEEK (-40°F to 250°F)

#### Internal Bearings:

- Silicon Carbide vs Silicon Carbide (standard)
- Carbon vs Silicon Carbide (optional)
- Silicon Carbide vs CMC (optional)

#### Casings Drain:

- No Drain or 1/2" NPT Plugged

### Flange Loadings

Allowable flange loadings imposed by the pipework are in accordance with ANSI/HI 9.6.2.

#### Gaskets:

- Compressed Synthetic Fibre or PTFE

#### Mounting Configuration:

- Close Coupled (NEMA C-Face or C-Face/Foot Flange Motors)
- Separately Mounted (NEMA Foot Mounted Motor and Flexible Coupling)

#### Constructional Variants:

- Secondary Containment
- Secondary Control
- Oil Bath / Oil Mist Lubrication of external bearing assembly
- 400-500°F Thermal Break

#### Instrumentation:

- Power Sensing, Temperature Sensing and VapourView®

Sundyne Headquarters:  
**Sundyne, LLC**  
14845 West 64th Avenue  
Arvada, Colorado 80007  
USA  
1-866-Sundyne  
Phone: 1 303 425 0800  
Fax: 1 303 940 2911  
www.sundyne.com

Sundyne United Kingdom:  
**Sundyne HMD Kontro Sealless Pumps**  
Marshall Road  
Hampden Park Industrial Estate  
Eastbourne East Sussex, BN22 9AN  
United Kingdom  
Phone: +44 (0)1323 452000  
Fax: +44 (0)1323 503369

Sundyne France:  
**Sundyne International S.A.**  
13-15, Bld. Eiffel - B.P. 30  
21604 Longvic Cedex  
France  
Phone: +33 (0)3 80 38 33 00  
Fax: +33 (0)3 80 38 33 66

Sundyne Spain:  
**Sundyne Marelli Bombas, S.R.L.**  
Ctra. Madrid-Toledo, Km.30.8  
45200 Illescas  
Toledo, Spain  
Phone: +34 925 53 45 00  
Fax: +34 925 51 16 00

All information provided is subject to change without notice.

© 2019 Sundyne, LLC  
All Rights Reserved. Other logos and trade names are the property of their respective owners.

Sundyne HMD Kontro  
CSAF1 4.0 5/19 AM Letter.