

GLOBAL TECHNICAL SERVICES

Lifecycle Support for Sealless
Magnetic Drive Pumps

- System Diagnostics
- Upgrades, Retrofits & Re-Rates
- Instrumentation
- Repairs, Parts & Kits
- Training & Familiarization



HMD Kontro **Sealless Pumps**

Reliable Uptime to Maximize Value

HMD Kontro sealless magnetic drive pumps are now more reliable, safe and efficient than ever before. Supported by a full range of aftermarket technical engineering services, you can be confident that your sealless pump will continue to provide years of dependable process and plant uptime.

Our lifecycle customer service strategy is designed to provide exceptional technical support that will maximize the operational success and longevity of your pump investment, significantly reducing downtime and delivering a trouble-free sealless experience.

Training & Familiarization

By providing our customers with a full range of commissioning and maintenance training programmes, we can help ensure the long-term, successful operation of your sealless pumps. We tailor our training to individual client or personnel requirements and hold courses on-site at an operational facility or at one of our service centers. These include familiarization courses for operators new to sealless technology.

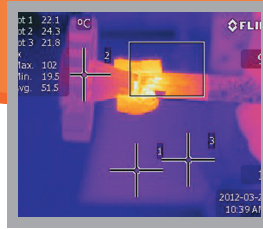
We are pleased to share the benefits of our 70 years of experience and wealth of best practice knowledge with our customers.



System Diagnostics

Using our comprehensive suite of diagnostic tools, and the latest analysis techniques, our skilled and experienced technical engineers can quickly identify operational issues in order to determine the root cause, then recommend remedial actions to not only solve the problem but also prevent a repeat occurrence.





Repairs, Parts & Kits

We have conducted comprehensive analysis of common repair profiles and generated a portfolio of generic part kits that can be held in stock by end users, or at our regional hubs. Our 'Reliability Kit' offers the best value for pump repair as it enables your onsite operatives, or our engineers, to deliver a fast, cost-effective response in the unlikely event that a problem occurs.

Our highly experienced technical team is on hand to recommend suitable spare parts and inventory levels for pumps located at any plant or location and to facilitate the procurement of replacement parts.

Engineered and manufactured to the same rigorous standards as our sealless pumps, many HMD Kontro parts are now interchangeable between pumps to reduce stockholding and cost.

For further information or to place a parts order, please contact us by email: hmdparts@sundyne.com

Upgrades, Retrofits & Re-Rates

Thousands of HMD Kontro pumps are now installed worldwide and, due to their inherent reliability, many of them are still operating effectively after several decades. However, during the course of a pump's lifecycle it is likely that the process requirement or operational environment in which it resides will change.

Enhanced reliability standards, modifications to your processes, environmental concerns and new industry compliance standards can all result in a need for a system overhaul. When this occurs, our technical engineers can advise on a suitable sealless pump model to replace or upgrade the existing plant without compromising your system's performance.

In addition, as new technology develops, we can recommend retrofit options to further optimize your system's power consumption, compliance and safety.

Re-Rates – where process needs change over the lifetime of your pump, we can assist with advice, and hands-on technical assistance if required, in re-rating your operational perimeters.

ZeroLoss™ Containment Shells – this revolutionary shroud design eliminates eddy current heating, achieving higher efficiency ratings. By reducing energy requirements and overall utility costs, as well as the intrinsic benefit of a reduced carbon footprint, the ZeroLoss™ containment shell has become a value-added feature of our product line options.

VapourView® Gas Detection – we have developed and patented non-intrusive instrumentation that uses an ultrasonic signal to detect the presence of gas in a liquid stream from outside the confines of the pump pressure boundary. Instant feedback helps prevent harm to the pump from occurring by providing early warning of incorrect priming, venting, cavitation or entrained process gas, which can result in pump damage or even failure. VapourView® was voted Technical Innovation (Product) of the year at the Pump Industry Awards 2017.

Secondary Containment / Control – our sealless magnetic drive pumps can be outfitted with secondary control devices that will severely restrict any leakage into the immediate locality. Fitted to the drive shaft assembly, these mechanical devices can be activated in the unlikely event of containment shell failure. Additionally, the pump's coupling housing can include gaskets to eliminate any leakage across the joining faces.

A Global Service with Local Support

Our team of technical engineers is capable of executing virtually any support service you require, in house or in the field, to help optimize the performance and your through-life experience of using HMD Kontro sealless pumps.

Wherever you are located around the world, you will always have access to our support and maintenance service, either directly with HMD Kontro's technical team or through our global network of competence trained country partners.

Our extensive range of factory and field service programs are the ideal solution for maintaining and improving the operational efficiency and safety of sealless magnetic drive pumps, and minimizing through life costs, with the goal of increasing the overall reliability and life value of your equipment.

To learn more and discuss the options available to you, please contact us directly by email: customersupport@sundyne.com or telephone: + 44 (0) 1323 452000.

Sundyne Headquarters:
Sundyne, LLC
14845 West 64th Avenue
Arvada, Colorado 80007
USA
1-866-Sundyne
Phone: 1 303 425 0800
Fax: 1 303 940 2911
www.sundyne.com

Sundyne United Kingdom
HMD Kontro Sealless Pumps
Marshall Road
Hampden Park Industrial Estate
Eastbourne East Sussex, BN22 9AN
United Kingdom
Phone: +44 1323 452000
Fax: +44 1323 503369

Sundyne China:
Sundyne Industrial Equipment
Building 1, No. 879 Shen Fu Road
XinZhuang Industrial Zone
Min Hang District
Shanghai, China 201108
Phone: +86 21 5055 5005
Fax: +86 21 5442 5265

Sundyne France:
Sundyne International S.A.
13-15, Bld. Eiffel - B.P. 30
21604 Longvic Cedex
France
Phone: +33 (0)3 80 38 33 00
Fax: +33 (0)3 80 38 33 66

Sundyne Spain:
Sundyne Marelli Bombas, S.R.L.
Ctra. Madrid-Toledo, Km.30.8
45200 Illescas
Toledo, Spain
Phone: +34 925 53 45 00
Fax: +34 925 51 16 00

All information provided is subject to change without notice.

© 2016 Sundyne, LLC
All Rights Reserved. Other logos and trade names are property of their respective owners.

HMD Kontro Sealless Pumps
Global Technical Services 1.0 8/17 AM