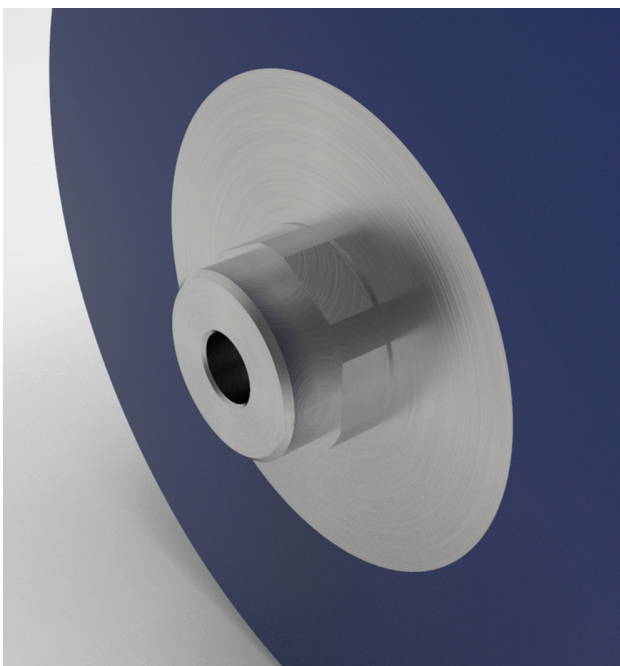


Hexagon Drive Upgrade

For the Outer Magnet Ring (OMR) on HMD Kontro pumps

To allow for quicker reassembly of the bearing housing during routine maintenance activities and for greater robustness, the OMR Hexagon Drive Upgrade provides an alternative to the standard Eccentric Drive design. Particularly suited to pumps with frequent maintenance schedules, the Hexagon Drive Upgrade is provided as a kit and will reduce downtime during planned maintenance activities.



Key Benefits of the Hexagon Drive OMR Upgrade:

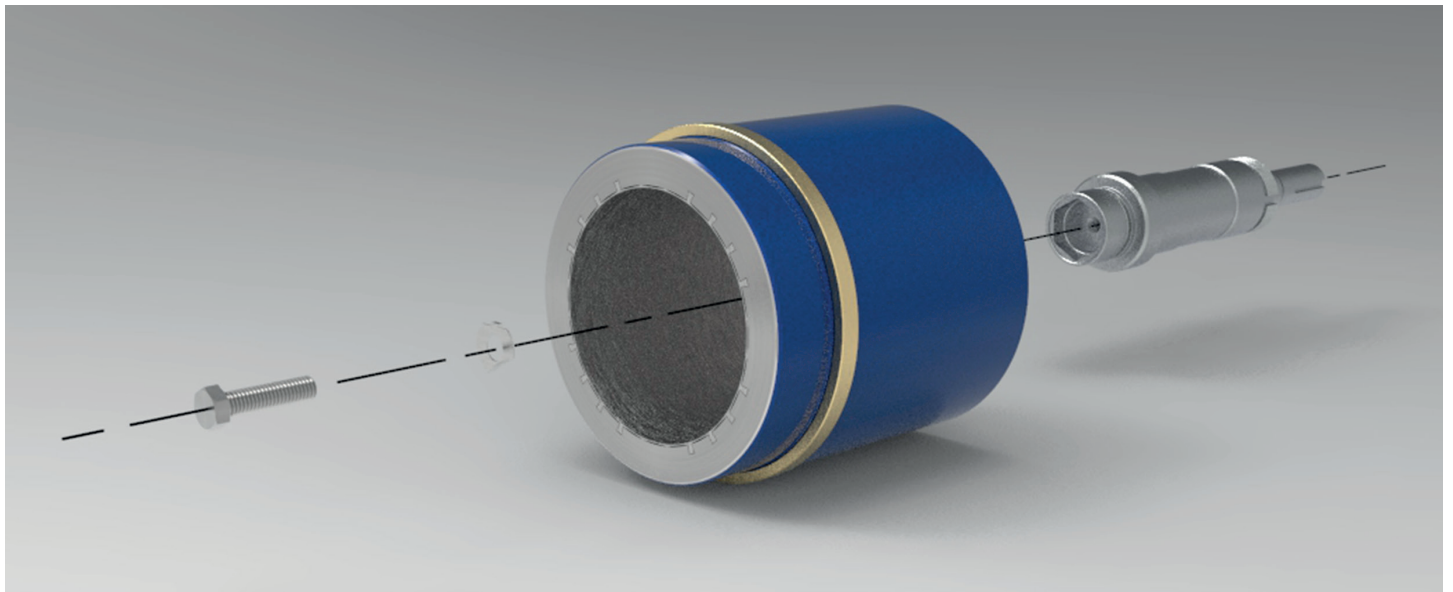
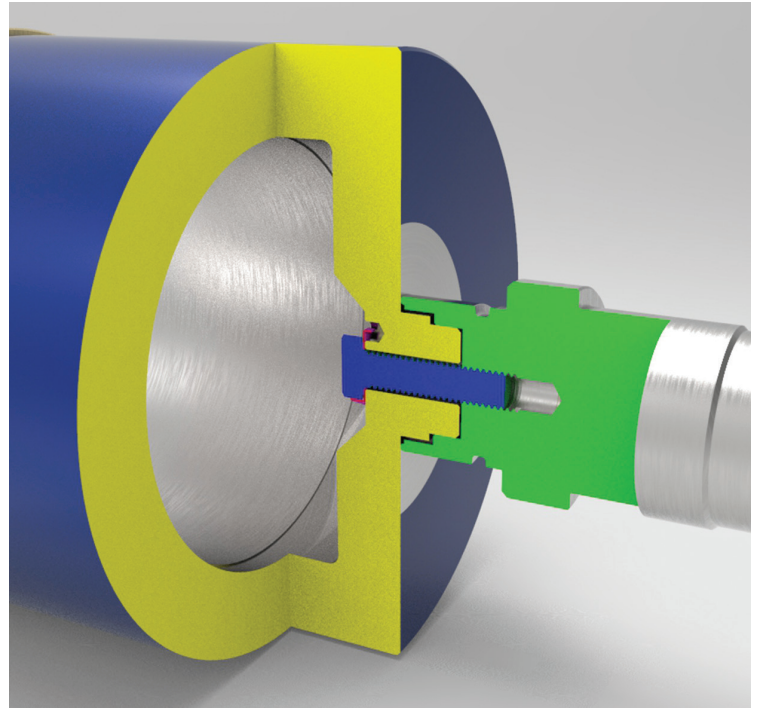
- More robust than the Eccentric Drive design, leading to increased MTBF.
- Easier to reassemble than an Eccentric Drive design.
- Reduced pump downtime thanks to maintenance time savings.
- Upgrade is completed quickly and easily onsite.
- No special tools required for upgrade or maintenance.
- Supplied as a complete kit.

Suitable for:

- HMD Kontro GSA Frame 1 and Frame 2 plus GSP Frame 1 and Frame 2 pumps.
- Pumps with frequent maintenance schedules.
- High torque applications.

Hexagon Drive Upgrade Kit includes:

- Outer magnet ring and new drive shaft, to suit bearing assembly.
- Roller element bearing gaskets.
- O rings and lock washers.



To maximise your uptime, please contact HMD Kontro's highly skilled Aftersales Technical Support Team who have vast experience in the operational aspects that customers may encounter during the lifetime of their sealless pump installations. We are keen to share this knowledge with you to ensure your pump maintenance is optimised and straightforward, fast and cost effective. Our Engineers are always on hand to provide trouble shooting advice and to recommend suitable upgrades, spares kits and stock inventory levels for pumps located at any plant or location around the globe.

Tel: +44 (0)1323 452154. Out of hours +44 (0)7789 171645

Email: customerservice@sundyne.com /

hmdparts@sundyne.com